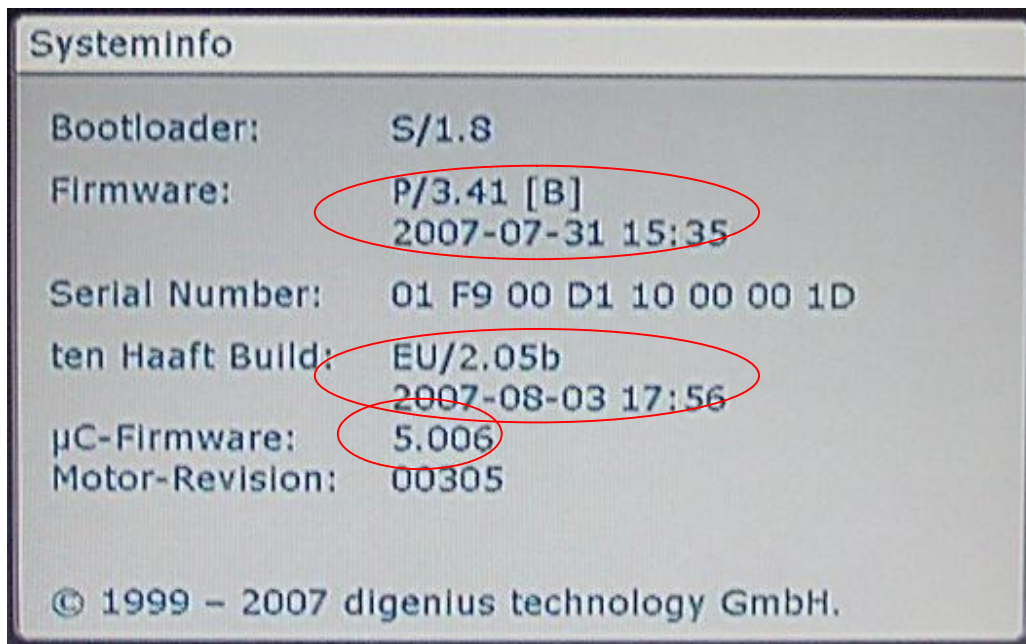


Update of Ten Haaft Receiver 2007-2010

Software and transfer of the senderlist:

- 1.0 First check your software-version. You get the information the main menu Extras / Systeminfo. *(see example below)*
Direct access to Systeminfo: MENU – MENU – 3 – 1

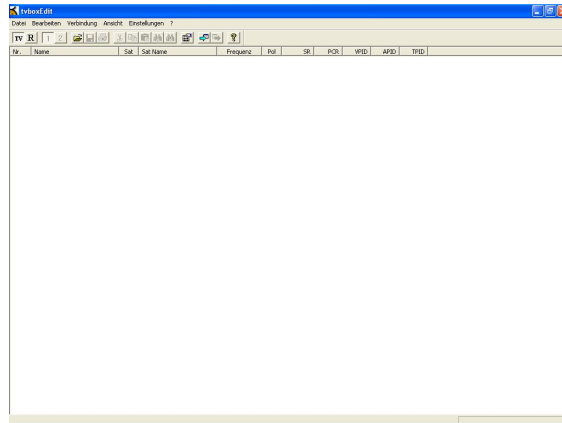


- 2.0 At a free serial interface port of your PC/Notebook (COM1, COM2, COM3 or COM4) connect a serial extension cable (with 9 pins that correspond to each other straight through, male to female connectors). Connect this to the 9pin male connector at the receiver. Please note that the receiver must be either operated in the vehicle or with a 12 volt power supply.

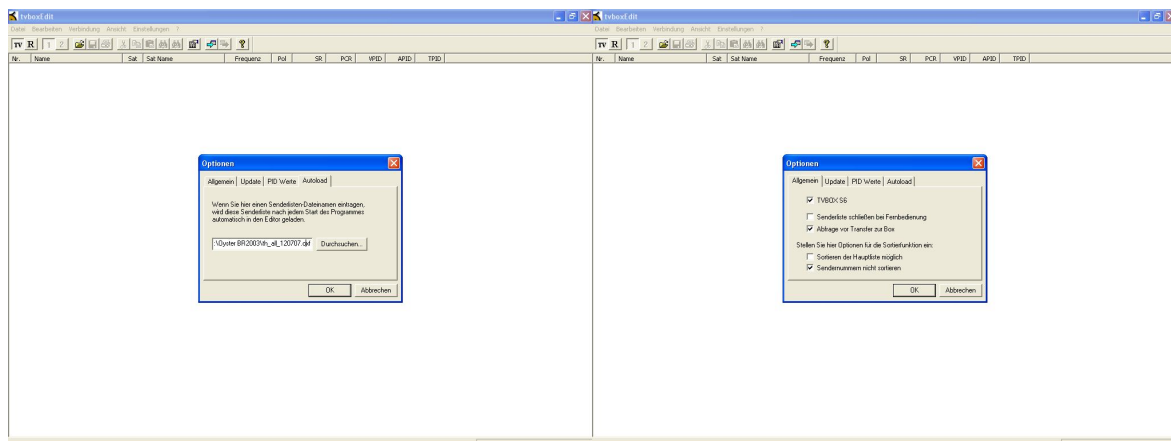
If your laptop doesn't have a serial port (RS232), you can use a USB to RS232 adapter. Keep in mind, that for this kind of connection a COM port (from 1 – 4) has to be defined in the system control of your computer (Hardware manager / COM and LPT) since the program delivered can only access on COM 1 – 4. Please also note, that you should only use the driver delivered with your USB-RS232 adapter (on CD), since the support of the Windows® system driver is very often insufficient.

- 3.0 Create a new folder called „TVBOX“ in your PC/Notebook, then extract the data of the zip-file „Ten Haaft Receiver 2007-2010“ in this folder.

- 3.1 Unpack the zip-file „tvboxedit“ in this folder and start the program "TVBoxEdit.exe".

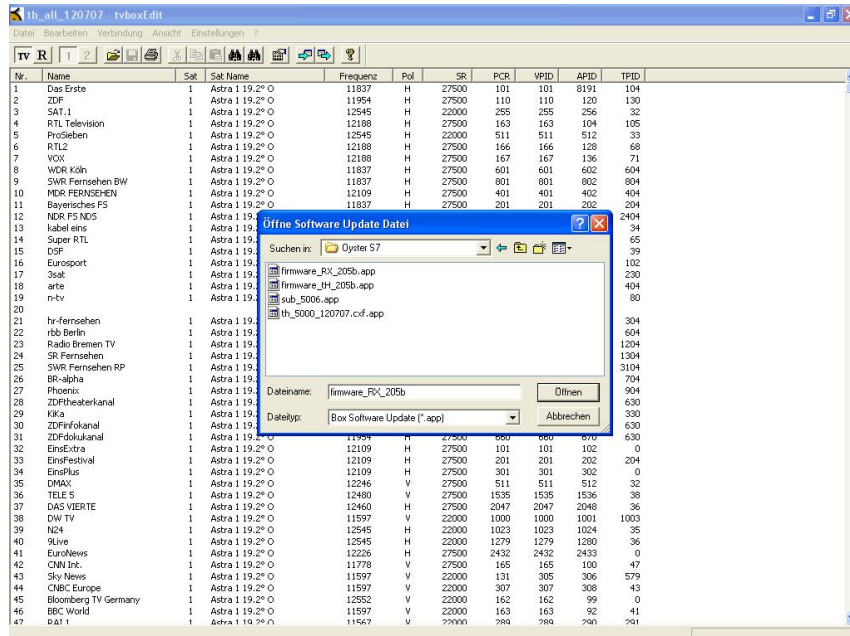


- 3.2 Please note that a mark is set under Setting / Options / General / TV Box S6. Select Autoload / Search the file "th_5000_2010-12-02.cxf" which is stored in the folder „Ten Haaft Receiver 2007-2010“.



- 3.3 Exit the program and restart it so the new settings are taken over.
- 3.4 The Sat-mouse should be connected so the the receiver can be switched on. A TV should also be connect to control the update of the receiver. The external unit need not to be connected.
- 3.5 Switch on the receiver with the main switch and the remote control.
(The Stand-By modus is insufficient for the software update.)
- 3.6 Please select in the program under Connection / COM Port the COM-Port from which you connected the cable to the receiver.

3.7 Then select in the program Connection / Box Software Update. A window pops up where you can select the update files.



4.0 Now select the file... (see 1.1)

...."bloader-2008-11-26.app"

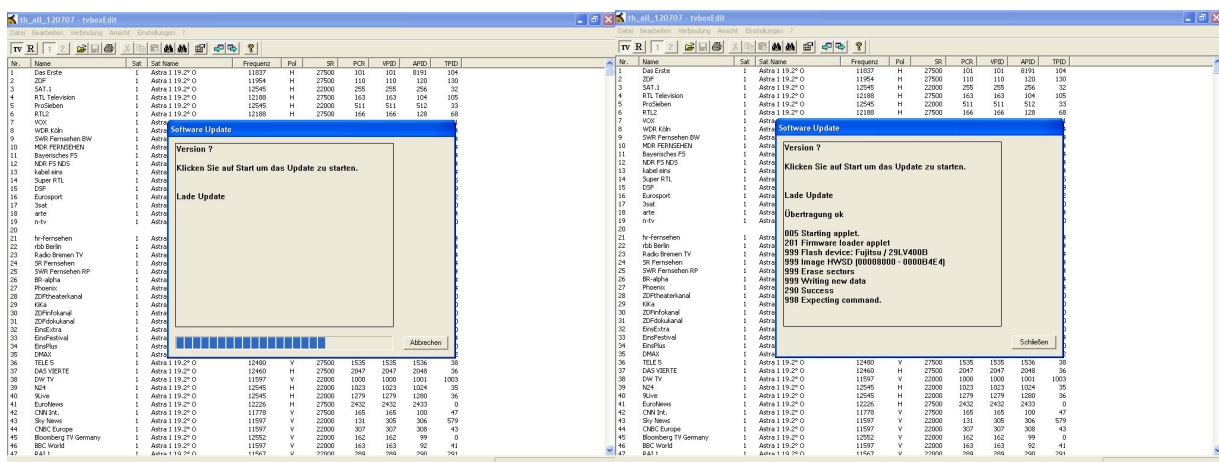
...."firmware_RX_214.app"

...."firmware_tH_214d.app"

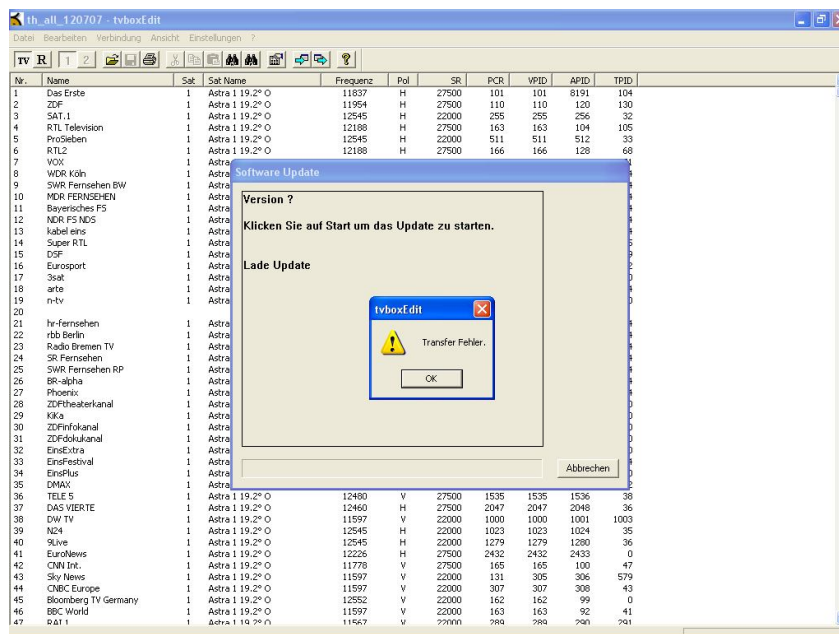
...."sub_5010.app"

...."th_5000_2010-12-02.cxf.app"

4.1 Click on the start button and wait (approx. 60 - 90 Sec) until you see the notice "998 Expecting Command" on your screen. Then click on "close".



With the operating system Windows 2000, XP or Vista it may happen that the transfer fails. In this case please repeat the transfer without switching off the receiver.



4.2 Repeat steps 3.7, 4.0 and 4.1 until all files are loaded on the receiver.

For further queries please contact us from Monday until Friday between 7:30 – 17:00
Phone number: +49/(0) 7237/4855-0.